



Technical data

M-240

M-250

SECTION THICKNESS

Total range(μ)	0,5 - 100	0,5 - 100
Thickness settings(μ)	0,5 - 5 in increments of 0,5 5 - 20 in increments of 1 20 - 60 in increments of 5 60 - 100 in increments of 10	0,5 - 5 in increments of 0,5 5 - 20 in increments of 1 20 - 60 in increments of 5 60 - 100 in increments of 10

TRIMMING

Total range(μ)	1 - 600	1 - 600
Thickness settings(μ)	1 - 10 in increments of 1 10 - 20 in increments of 2 20 - 50 in increments of 5 50 - 100 in increments of 10 100 - 600 in increments of 50	1 - 10 in increments of 1 10 - 20 in increments of 2 20 - 50 in increments of 5 50 - 100 in increments of 10 100 - 600 in increments of 50

SPECIMEN FEED (mm)	28 ± 1 mm	28 ± 1 mm
VERTICAL STROKE (mm)	72 ± 1 mm for sectioning of mega-cassettes	72 ± 1 mm for sectioning of mega-cassettes
USER INTERFACE	7" capacitive touchscreen display	7" capacitive touchscreen display

OPERATING MODES	Manual: Rotational and Rocking	Manual: Rotational and Rocking Motorized: Interval, Single, Continuous and Multi Stroke
------------------------	--------------------------------	--

SPECIMEN RETRACTION	Selectable between 5 – 250 Default value: 40μ Optional function that can be deactivated	Selectable between 5 – 250 Default value: 40μ Optional function that can be deactivated
MOTORIZED COARSE FEED (μm/sec)	300 (slow speed forward) 800 (fast speed forward) 1800 (superfast speed backwards) Additional function for forward/ backward feed in step mode	300 (slow speed forward) 800 (fast speed forward) 1800 (superfast speed backwards) Additional function for forward/ backward feed in step mode

SECTIONING SPEED		0,5 - 450 mm/s
BLADE HOLDER TYPE	2 in 1 for high and low profile blades	2 in 1 for high and low profile blades
MAX.SPECIMEN SIZE (mm)	50x60x40 (w x h x d) Super Cassette Clamp 68x48x15	50x60x40 (w x h x d) Super Cassette Clamp 68x48x15
SPECIMEN ORIENTATION	± 8° horizontal and vertical. Rotational capability: 360° Indication of 0-position by means of "click" (x and y)	± 8° horizontal and vertical. Rotational capability: 360° Indication of 0-position by means of "click" (x and y)
POWER REQUIREMENTS	100-240 VAC / 50-60Hz	100-240 VAC / 50-60Hz
CONSUMPTION (VA)	40	100
DIMENSIONS (W - D - H)	465 x 540 x 298 mm	465 x 540 x 298 mm
WEIGHT (kg)	33,9	39



M-240 & M-250

State-of-the-art technology provides the operational comfort and stability required for high-quality cutting in routine, research and industrial applications.

AUTOMATED AND SEMI-AUTOMATED ROTARY MICROTOMES
M-240 / M-250

 StatLab |  DIAPATH |  CellPath |  Myr

Innovating pathology essentials. Together.

FIXATION **GROSSING** **PROCESSING** **EMBEDDING** **CUTTING** **STAINING/COVERSLIPPING**

Discover the full range on www.myr.com/es

Especialidades Médicas Myr S.L. ISO 9001 and ISO 13485 certified company
Lleida, 17-23 43712 Llorenç del Penedès - Spain
T +34 977 66 8020 — esp.medicas@myr.com.es — www.myr.com.es



AUTOMATED & SEMI-AUTOMATED ROTARY MICROTOMES

M-240 & M-250

State-of-the-art technology provides the operational comfort and stability required for high-quality cutting in routine, research and industrial applications



INTUITIVE CONTROL PANEL

7" full-color TFT display with cutting-edge PCAP touchscreen technology. Its ideal size and tilt angle allow smooth, intuitive parameter selection. The ergonomic design ensures maximum user comfort and enhances operational safety during routine use.



KNIFE CARRIER SYSTEM: LESS EFFORT, MORE PERFORMANCE

The blade holder glides effortlessly side-to-side, allowing full blade usage. Compatible with both low and high-profile blades, every holder includes a protective finger guard to ensure operator safety without compromising performance.



RAPID MOVEMENTS, WITH MOTORIZED SPECIMEN FEED

Select between continuous or step-by-step coarse feed via touchscreen. Speed is adjustable for controlled advancement, while a high-speed retraction function quickly brings the sample back to home position for fast repositioning.



ULTRA-PRECISE POSITIONING, WITH Advanced Specimen Orienting Head

Indication of 0-position in x and y direction by palpable "click" for the precise alignment of the specimen. The 360° rotational capability of the specimen clamp and 8° mobility range along the x and y-axis of the orienting specimen head enables.



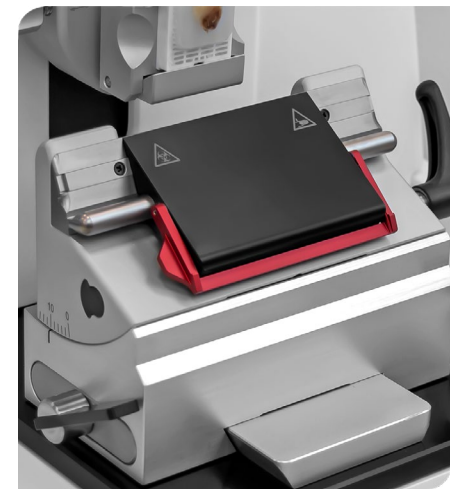
EXTRA-LARGE WASTE TRAY

Spacious 1.7-liter tray with advanced antistatic coating to repel paraffin and reduce cleaning time. Designed with user comfort in mind, it includes a resting surface for the arm and a practical top tray for convenient tool placement.



ERGONOMIC & FLUID HANDWHEEL

Innovatively counterbalanced, the handwheel guarantees smooth, fatigue-free rotation in either direction. It locks securely in any position, offering maximum cutting control and ergonomic support for long working sessions.



Exclusive M-250 features

LATERAL BUTTON

Embedded in the left side of the automatic microtome for speed/start-stop functions. It is possible to adjust the cutting speed while the motorized cutting is running.

EXTERNAL PANEL *Optionally available*

The entire touch screen functions are integrated into the external control panel for higher adaptability to technicians' preferences.

ELECTRONIC BRAKE

Once the automatic sectioning mode is paused, the electronic brake automatically activates, or alternatively, when sectioning manually, it can be activated by pressing the brake key on the touchscreen.

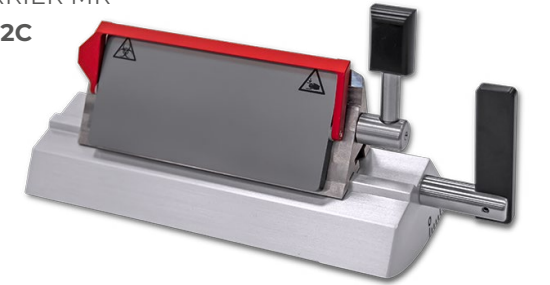
FOOTSWITCH *Optionally available*

Blade holders and clamps

KNIFE CARRIER ME
M240-4101



KNIFE CARRIER MR
M240-4002C



UNIVERSAL CLAMP
M240-2200



UNIVERSAL CLAMP
For Super Mega-Cassettes
M240-2300



STANDARD CLAMP
M240-2100



ORDERING INFORMATION

M250-01 M240-01	Microtome with knife carrier MR (for High and Low profile blades, lateral adjustment), quick release clamp.
M250-02 M240-02	Microtome with knife carrier MR, (for High and Low profile blades, lateral adjustment), standard specimen clamp.
M250-03 M240-03	Microtome with knife carrier ME (for High and Low profile blades, lateral adjustment), quick release clamp.
M250-04 M240-04	Microtome with knife carrier ME, (for High and Low profile blades, lateral adjustment), standard specimen clamp.

OPCIONAL ACCESSORIES

M250-1000	Footswitch
M250-2000	External control panel
M240-1000	Fixed specimen head
M240-1100	Orienting specimen head
M240-2100	Standard specimen clamp 55x50 mm
M240-2200	Universal specimen clamp (Quick release clamp)
M240-2300	Universal specimen clamp (for Super Mega-cassettes)
M240-4002C	Knife carrier for disposable Blades, model MR
M240-4101	Knife carrier for disposable Blades, model ME

Essential accessories



DISPOSABLE BLADES

MCUT microtome disposable blades are aimed to section the specimens at a certain selected stable thickness through required technical expertise such as sophisticated heating processes and polishing/coating techniques.

REFERENCE	DESCRIPTION	EDGE ANGLE	SIZE (W - H - D)
MCUT-3508	Disposable microtome blades (low profile)	35°	80 x 8 x 0,254 mm
MCUT-3514	Disposable microtome blades (high profile)	35°	80 x 14 x 0,317 mm